

***Lenti fache in camera
posteriore:
PRL***

(IOLTECH / CARL ZEISS MEDITEC)



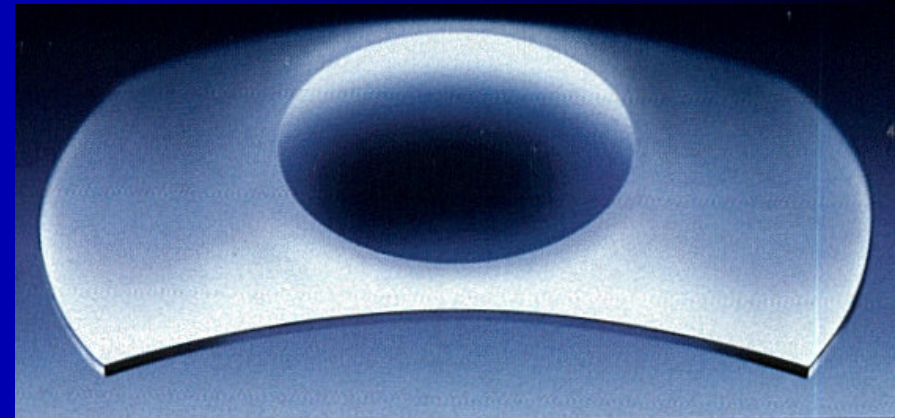
67° Convegno S.O.L.

***Claudio Lucchini, MD; Dimitrii Dementiev, MD
Milano, Italy / Moscow, Russia***

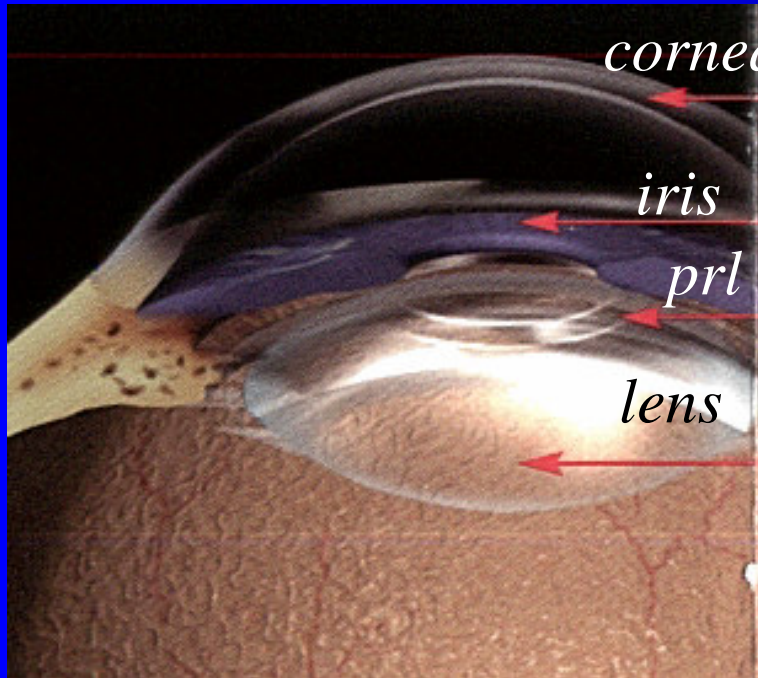
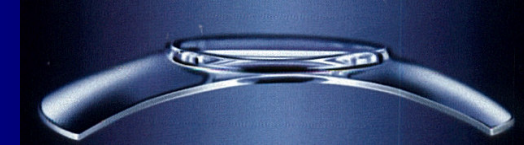
PRL™

Phakic Refractive Lens

- **MATERIAL: SILICONE**
- **ONE PIECE DESIGN**
- **WIDTH 6.0 mm**
- **OVERAL LENGTH:**
MYOPIC MODEL: 10.8 & 11.3 mm
HYPEROPIC MODEL: 10.6 mm
- **OPTICAL DIAMETER:**
MYOPIC MODEL: 4.5-5.0mm
HYPEROPIC MODEL: 4.5 mm
- **DIOPTRER RANGE:**
M -3 until -29
H +3 until +11
- **DIOPTRIC INCREMENT : 0.5D.**



PRL "CONCEPT"



1. Hydrophobic silicone RI 1.46
2. Radius of curvature = Lens RC
3. Hydrodynamics (pushed UP)
4. Natural "vaulting"

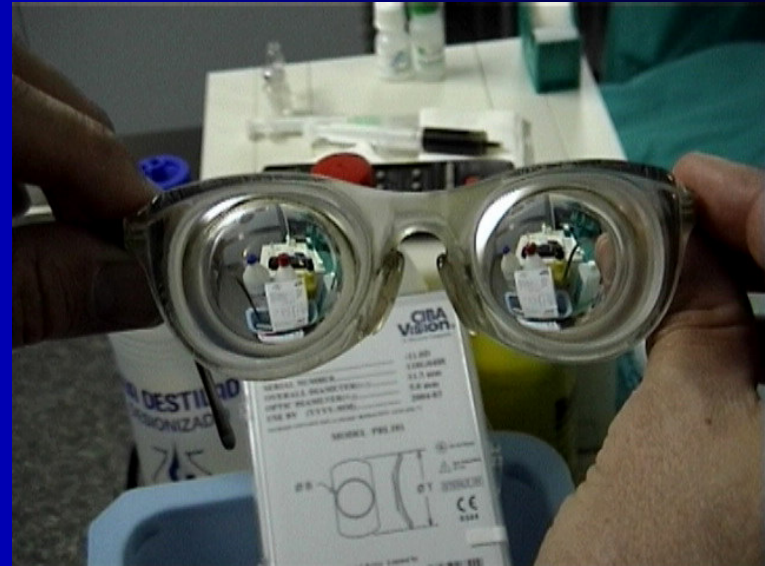
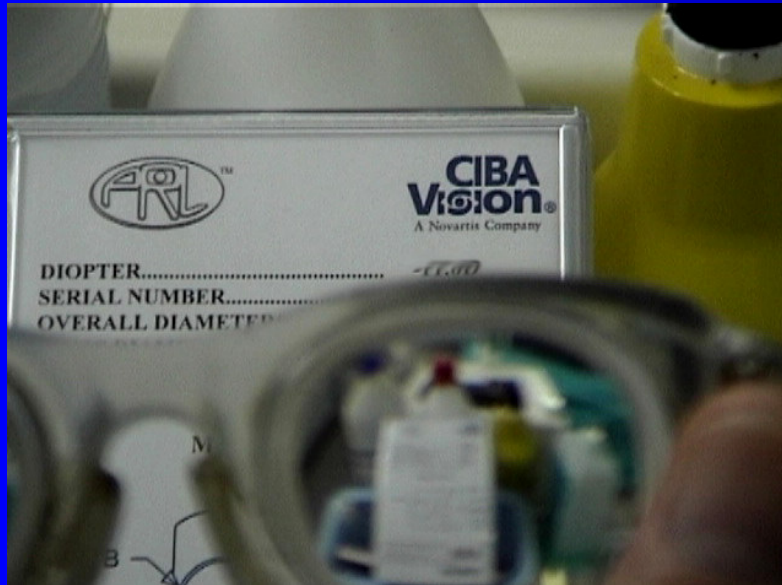
1. Touch of iris
2. No touch of lens



PRL

MYOPIC RANGE

- FROM -3.0 DPTRS.
- TO -29.0 DPTRS.



HYPEROPIC RANGE

FROM +2.5 DPTRS.
TO + 11.0 DPTRS.

SURGICAL TECHNIQUE

Surgically dependant procedure!!!

Right Instruments USE & careful surgery

Excellent results

- FORCEPS METHOD OF IMPLANTATION
- INJECTOR
- VACUUM DELIVERY SYSTEM

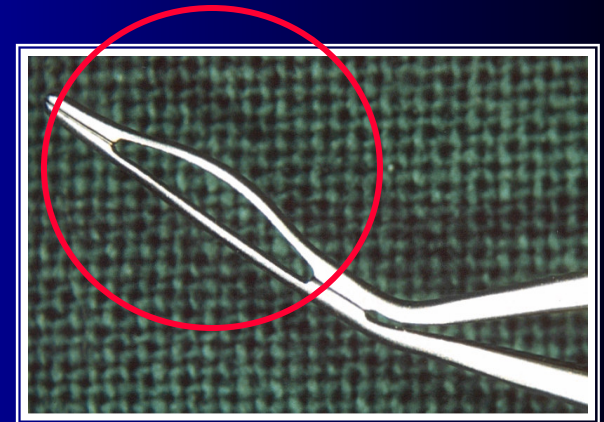
INSTRUMENTATION DEVELOPMENT 2000



**TRAPEZOID PRL
DEMENTIEV BLADE**

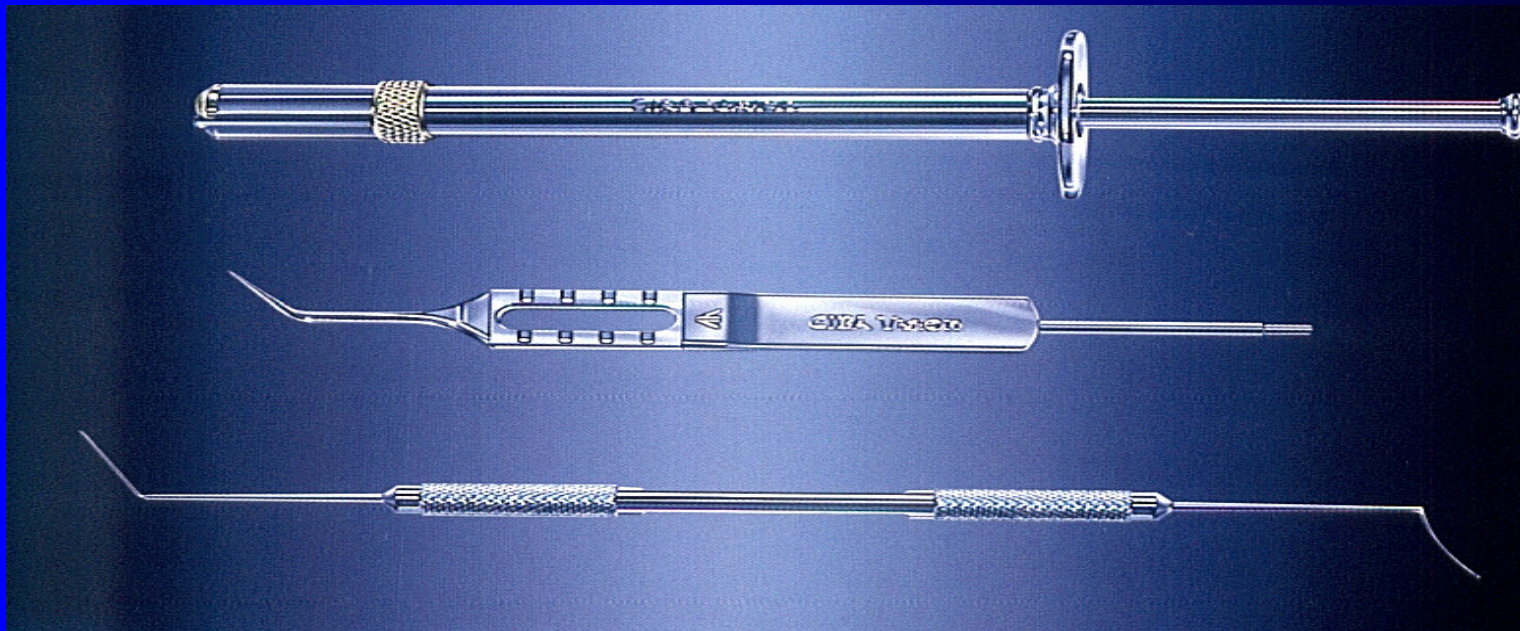


PRL DEMENTIEV FORCEPS





SURGICAL TECHNIQUE & INSTRUMENTS EVOLUTION 2002



PRLTM

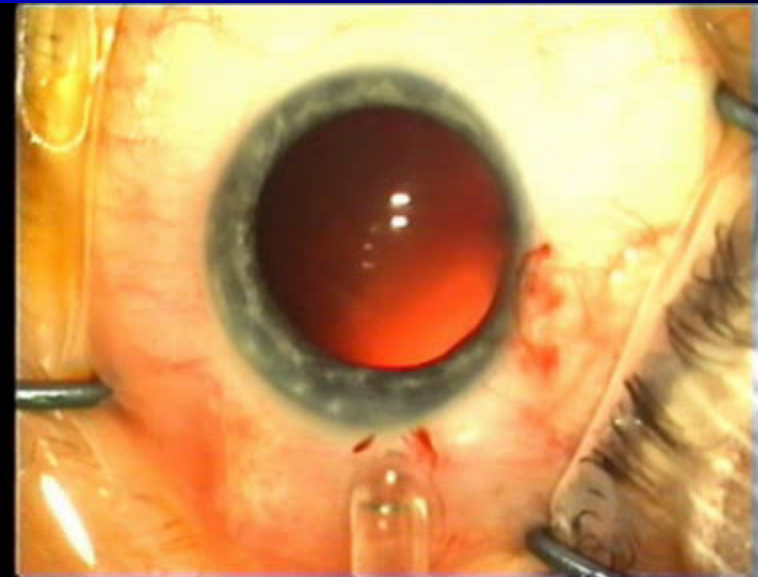
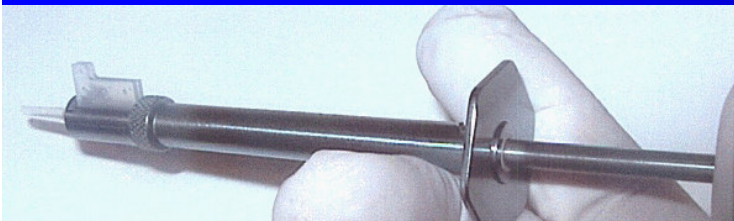
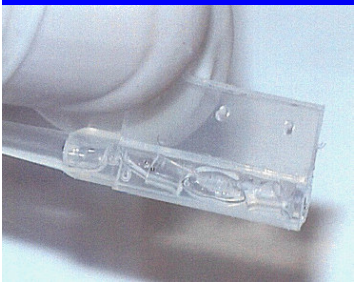
I N J E C T O R S Y S T E M

SURGICAL TECHNIQUE

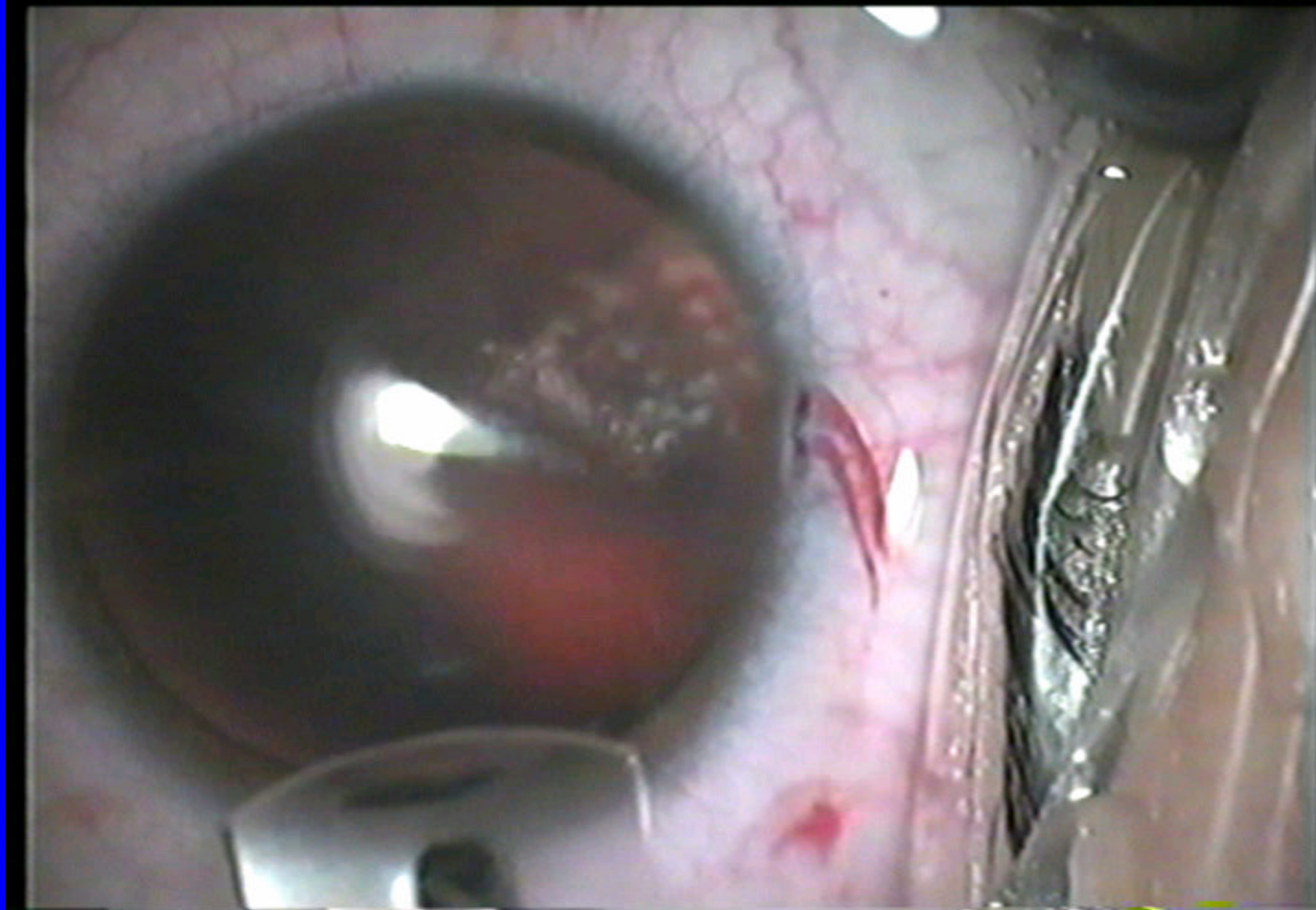
EVOLUTION **2002**

PRL "INJECTION" TROUGH 3.2mm

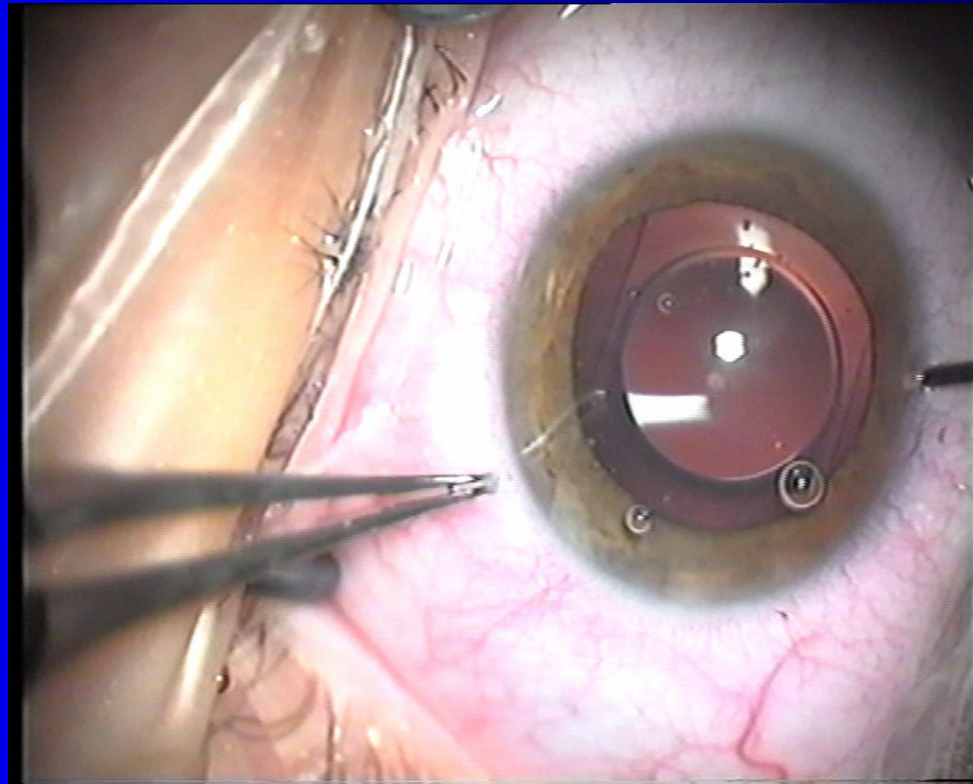
CLEAR CORNEA INCISION



**SURGICAL TECHNIQUE
EVOLUTION 2004
*VACUUM DELIVERY SYSTEM***



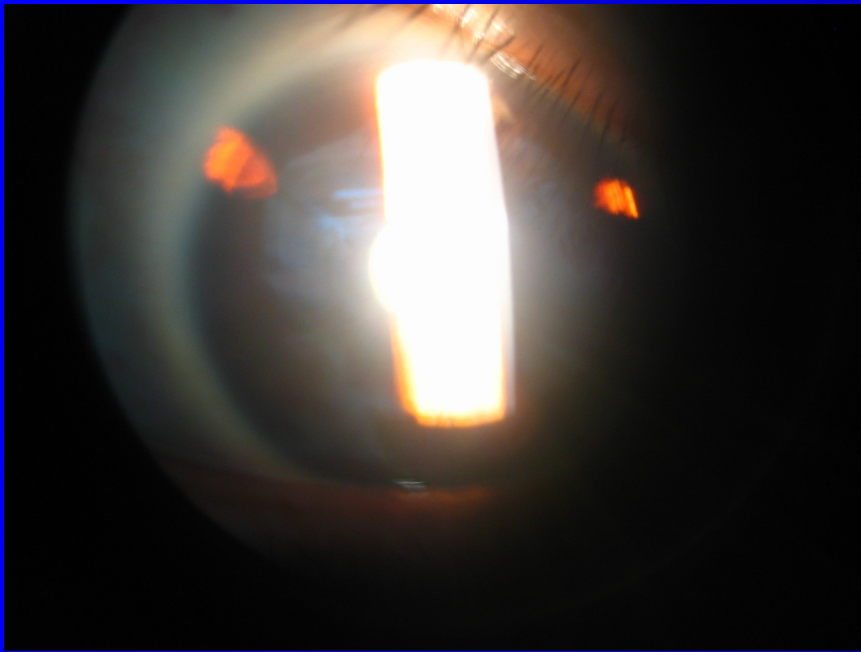
**HARD MOOVING OF THE IMPLANT
UNDER THE IRIS CAN BE A
REASON OF IT DECENTRATION**



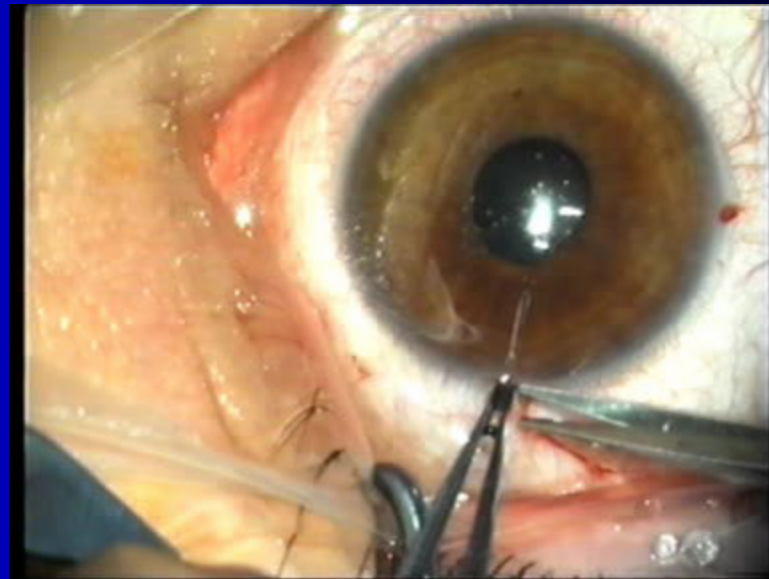
USE of

DOUBLEEDGE Dementiev spatula for manipulation under iris

IMPORTANT!!!



YAG LASER PI



SURGICAL PI



FUTURE of PHAKIC IOLs

YEAR 2003 32.000 IMPLANTATIONS

LAST DECADE 150.000 IMPLANTATIONS

ESTIMATION for 2008

- **100.000 IMPLANTATIONS PER YEAR IN EUROPE**
- **200.000 IMPLANTATIONS PER YEAR IN USA (FDA)**